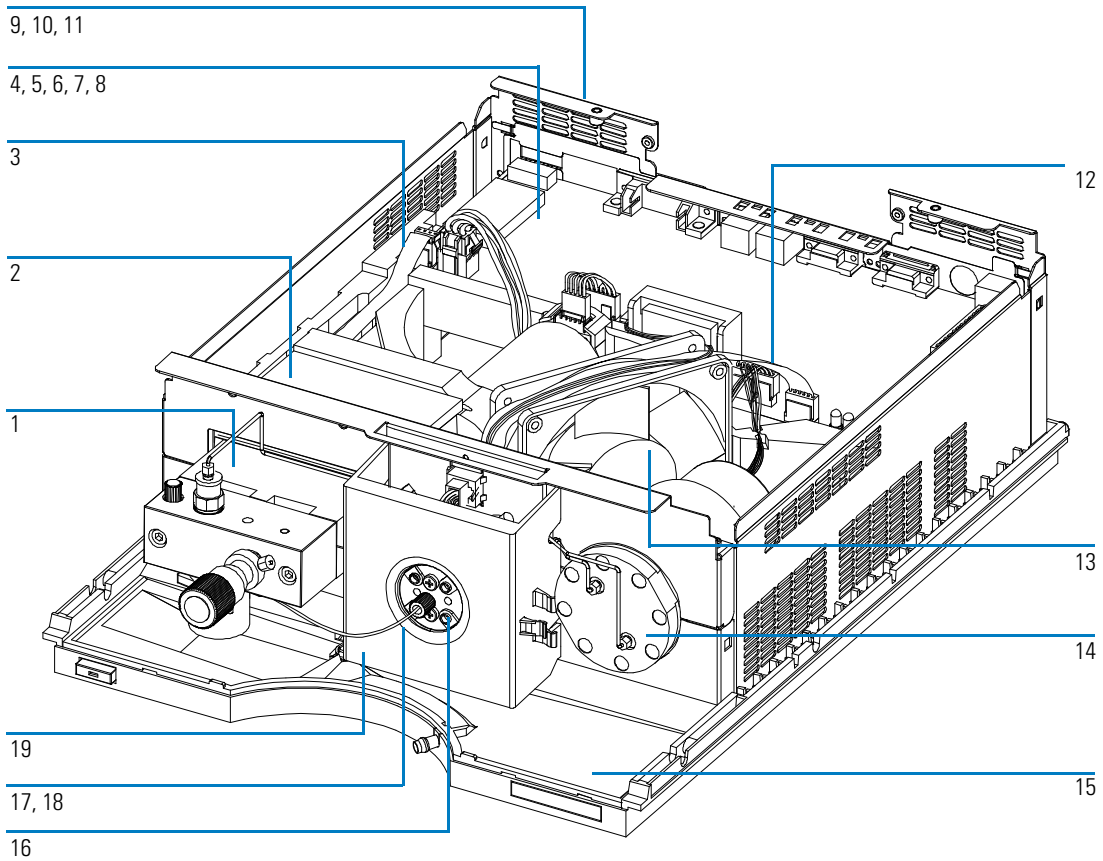


---

## Overview of Main Assemblies

**Figure 27** Overview of Main Assemblies



Parts and Materials  
**Overview of Main Assemblies**

**Table 7**

<b>Repair Parts - Pump Housing and Main Assemblies</b>		
<b>Item</b>	<b>Description</b>	<b>HP Part Number</b>
1	Pump head, see page 172	G1311-60004
2	Pump drive assembly	G1311-60001
	Exchange assembly — pump drive	G1311-69001
3	Cable assembly — AIV to main board	G1311-61601
4	Low-pressure pump main board (LPM)	G1311-66520
	Exchange assembly — LPM board	G1311-69520
5	Standoff — HP-IB connector	0380-0643
6	Standoff — remote connector	1251-7788
7	Nut M14 — analog output	2940-0256
8	Washer — analog output	2190-0699
9	Power supply	0950-2528
10	Screw, M4, 8 mm lg — power supply	0515-0910
11	Washer — power supply	2190-0409
12	Cable to MCGV	G1311-61600
13	Fan assembly	3160-1016
14	Damping unit	79835-60005
15	Leak pan — pump	5041-8390
16	Multi-gradient assembly (MCGV)	G1311-67701
	Exchange assembly — MCGV	G1311-69701
17	Screw, M4, 40 mm lg — MCGV	0515-0906
18	Rubber holder — MCGV	1520-0401